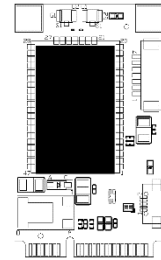
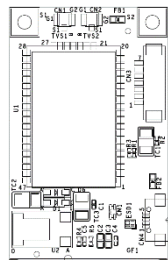
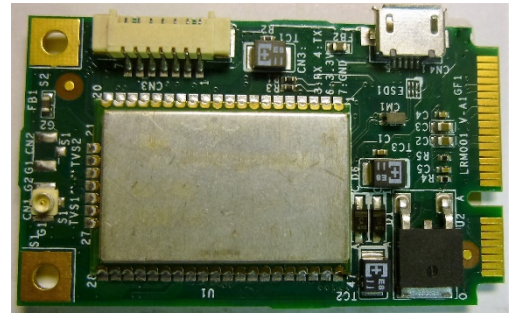


LoRa[®] Mini PCIe

LRM001 : 433/868/915MHz

Features :

- . Compliant with LoRa[®]
- . Mini PCI Express form factor
- . 2 Antennas to support 433 or 868 or 915MHz
- . Hardware LoRa[®] reset
- . Low power consumption
- . Win 7 and Window 10 support
- . UART for serial data communication
(Available only model LRM002)



Interface :

	LRM001	LRM002	LRM003
Mini PCIe	✓		✓
Full Size			
USB 2.0	✓		✓
UART		✓	
433M or	✓ Model 433	✓ Model 433	✓ Model L
868M or	✓ Model 868	✓ Model 868	✓ Model H
915M or	✓ Model 915	✓ Model 915	✓ Model H

Model Lists:

LRM001-433	Mini PCIe USB 433MHz
LRM001-868	Mini PCIe USB 868MHz
LRM001-915	Mini PCIe USB 915MHz
LRM002-433	UART 433MHz
LRM002-868	UART 868MHz
LRM002-915	UART 915MHz
LRM003-L	Mini PCIe USB 410 ~525MHz
LRM003-H	Mini PCIe USB 862 ~ 1020MHz

Common Specification:

Operating Humidity	5% ~ 95% RH
Operating Temperature	-20° C~ 60° C
Storage Temperature	-20° C~ 80° C

Packing List

- u. FL Antenna Cable
- 433 or 868 or 915MHz Antenna



LiYA Tech. Corp.
Email : info@liyatech.com

*All specifications are subject to change without notice.