

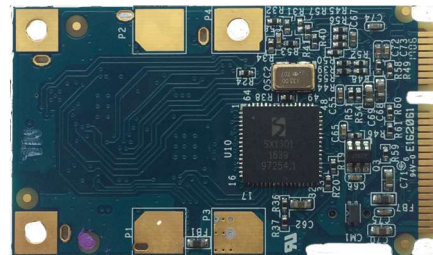
LCM001-915

SX1301® Base LoRa® Concentrator USB and Mini PCIe interface, 915MHz (Collect and forward the LoRaWan® sensors' packet)

The LCM001 is an LoRa / LoRaWan packet forwarder module which is used to build Lora gateway. The LCM001 is built upon SX1301® from Semtech®. The control firmware for SX1301® is from Semtech® and the source code is in <https://github.com/Lora-net>. LCM001 has been successfully ported to both PC with Ubuntu and Raspberry PI. It can collect and forward the packets collected from the LoRaWan® sensor nodes. Our driver, codes and programs are also based on Semtech'® code in <https://github.com/Lora-net>. There are USB and SPI driver for this board, so the board can collect the packet from the node and forward the packet to another host (PC or ...). User can use their own network server (host) to decrypt the received packet and manage the sensor nodes.

Features

- . Semtech® SX1301
- . Semtech® SX1257 x 2
- . USB, Mini PCIe interface
- . Mini PCI Express form factor
- . u.FL antenna to support 915MHz
- . FTDI® 232H
- . Support Linux: Ubuntu 14 and 16
- . Support Raspberry Pi



Specification

- . Semtech® SX1301
- . Semtech® SX1257 Radio
- . FTDI® 232H
- . LoRa® modulation technology
- . Mini PCIe interface
- . USB interface
- . Mini PCI Express form factor
- . Frequency 915MHz
- . u.FL connector to antennas
- . 8 parallel RF channels
- . Receiver sensitivity: -130 dbm
- . Support Linux® : Ubuntu 12.04 ,14 and 16
- . Hardware reset

- . Dimension: 50 x 29 x 9 mm
- . Voltage: 3.3V mini PCIe or 5V USB
- . Operating temperature -40° ~ 80° C
- . Reference document: <https://github.com/Lora-net/>

Related products

	LRM001	LRM003	LRM005
Mini PCIe	✓	✓	✓
Full Size			
USB 2.0	✓		✓
UART	✓		✓
433M or	✓ Model 433		
868M or	✓ Model 868	✓ Model 868	
915M or	✓ Model 915	✓ Model 915	
923M		✓ Model 923	✓ Model 923

Model Lists:

LRM001-433	USB & Mini PCIe 433MHz
LRM001-868	USB & Mini PCIe 868MHz
LRM001-915	USB & Mini PCIe 915MHz
LRM001-433- UART	UART 433MHz
LRM002-868- UART	UART 868MHz
LRM002-915- UART	UART 915MHz

Common Specification:

Operating Humidity	5% ~ 95% RH
Operating Temperature	-40° C~ 80° C
Storage Temperature	-40° C~ 80° C

Packing List

- . u. FL Antenna Cable
- . 433 , 868 or 915MHz Antenna



LiYA Tech. Corp.
Email :info@liyatech.com

*All specifications are subject to change without notice.