



Document Name	M150GNN2 R3 Product Specification			Page 1 of 25	
Document No.		Made/Revised Date	2016/04/18	Ver.	00

Revised Record				
Ver.	Date	Revised Content/Summary	Page	Revised By
00	2016/04/18	Tentative	All	/



Document Name	M150GNN2 R3 Product Specification			Page 2 of 25	
Document No.		Made/Revised Date	2016/04/18	Ver.	00

## CONTENTS

<b>1.0 GENERAL DESCRIPTIONS</b>	<b>3</b>
<b>2.0 ABSOLUTE MAXIMUM RATINGS</b>	<b>4</b>
<b>3.0 OPTICAL CHARACTERISTICS</b>	<b>6</b>
<b>4.0 ELECTRICAL CHARACTERISTICS</b>	<b>9</b>
<b>5.0 MECHANICAL CHARACTERISTICS</b>	<b>17</b>
<b>6.0 RELIABILITY CONDITIONS</b>	<b>21</b>
<b>7.0 PACKAGE SPECIFICATION</b>	<b>22</b>
<b>8.0 LOT MARK</b>	<b>23</b>
<b>9.0 GENERAL PRECAUTION</b>	<b>24</b>



Document Name	M150GNN2 R3 Product Specification			Page 3 of 25	
Document No.		Made/Revised Date	2016/04/18	Ver.	00

## 1.0 General Descriptions

### 1.1 Introduction

The M150GNN2 R3 is a color active matrix thin film transistor (TFT) liquid crystal display (LCD) that uses amorphous silicon TFT as a switching device. This model is composed of a TFT LCD panel, a driver circuit and a backlight system. This TFT LCD has a 15.0 inch diagonally measured active display area with XVGA resolution (1,024 horizontal by 768 vertical pixels array).

### 1.2 Features

- Supported XVGA Resolution
- LVDS Interface
- Compatible with RoHS Standard

### 1.3 Product Summary

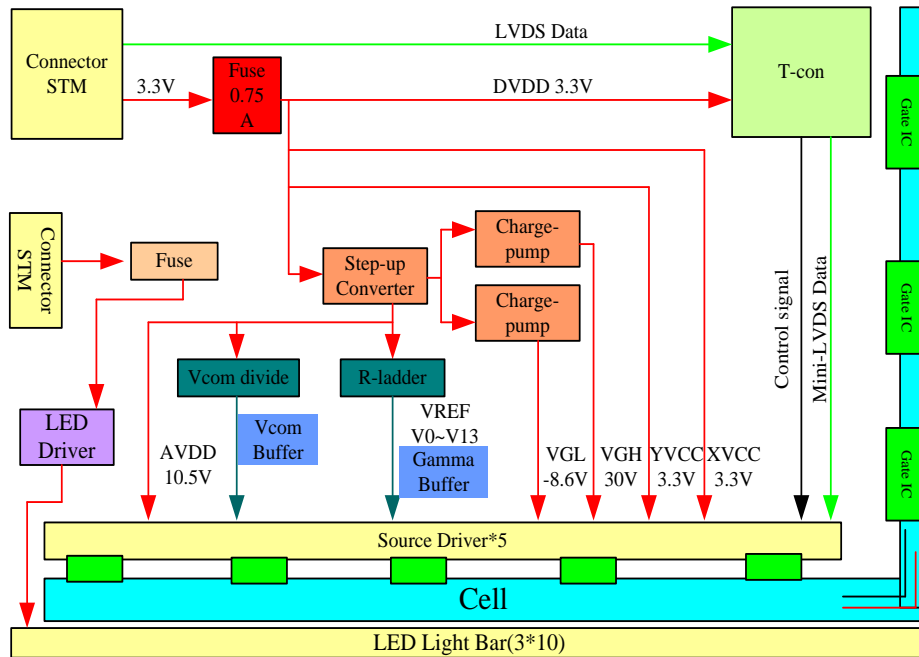
Items	Specifications	Unit
Screen Diagonal	15.0	inch
Active Area (H x V)	304.13 x 228.10	mm
Number of Pixels (H x V)	1,024 x 768	-
Pixel Pitch (H x V)	0.2970 x 0.2970	mm
Pixel Arrangement	R.G.B. Vertical Stripe	-
Display Mode	Normally White	-
White Luminance	(420) (Typ.)	cd /m <sup>2</sup>
Contrast Ratio	(800)(Typ.)	-
Response Time	16 (Typ.)	ms
Input Voltage	3.3 (Typ.)	V
Power Consumption	(8.8)(@Black)	W
Weight	(1200)(Max.)	g
Outline Dimension (H x V x D)	326.50(Typ.)x 253.50(Typ.)x12.00(Typ.)	mm
Electrical Interface (Logic)	LVDS	-
Support Color	16.2 M	-
NTSC	(70) (Typ.)	%
Viewing Direction	6 O'clock	-
Surface Treatment	Anti-glare & hard-coating 3H	-

Document Name	M150GNN2 R3 Product Specification			Page 4 of 25	
Document No.		Made/Revised Date	2016/04/18	Ver.	00

## 1.4 Functional Block Diagram

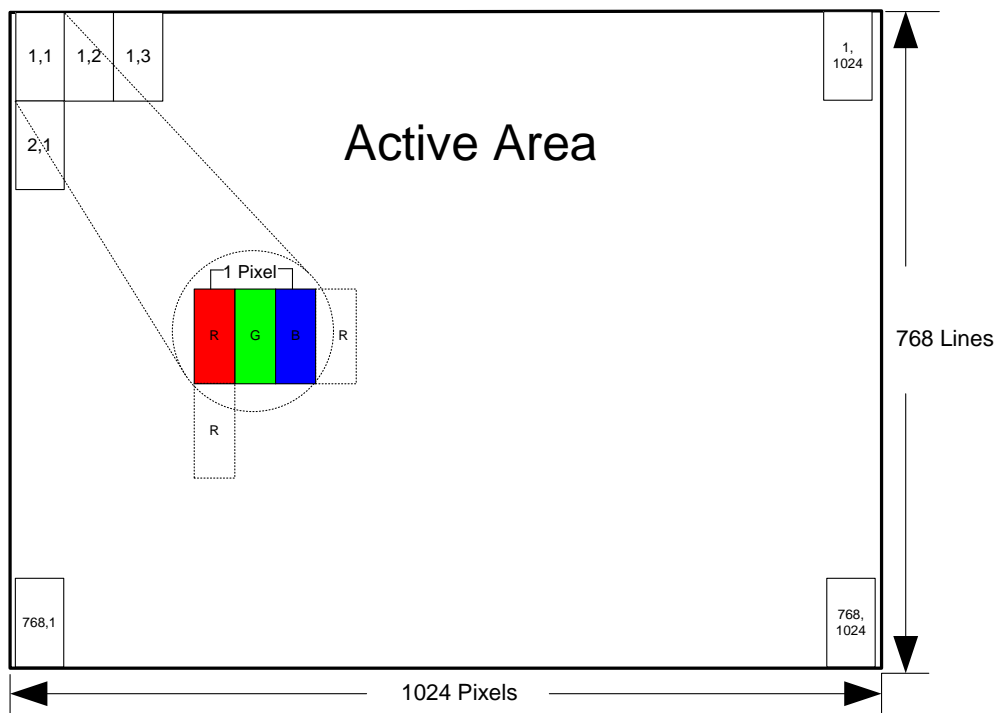
Figure 1 shows the functional block diagram of the LCD module.

**Figure 1 Block Diagram**



## 1.5 Pixel Mapping

**Figure2 Pixel Mapping**



## 2.0 Absolute Maximum Ratings

Document Name	M150GNN2 R3 Product Specification			Page 5 of 25	
Document No.		Made/Revised Date	2016/04/18	Ver.	00

**Table 1 Electrical & Environment Absolute Rating**

Item	Symbol	Min.	Max.	Unit	Note
Logic Supply Voltage	$V_{DD}$	-0.5	5	V	(1),(2)
Operating Temperature	$T_{OP}$	-10	65	°C	(3),(4),(5),(6)
Storage Temperature	$T_{ST}$	-20	70	°C	
Vibration(Non-operating)	VB	-	1.5	G	(7)
Shock(Non-operating)	Shock	-	50	G	(8)

Note (1) Permanent damage may occur to the LCD module if beyond this specification. Functional operation should be restricted to the conditions described under normal operating conditions.

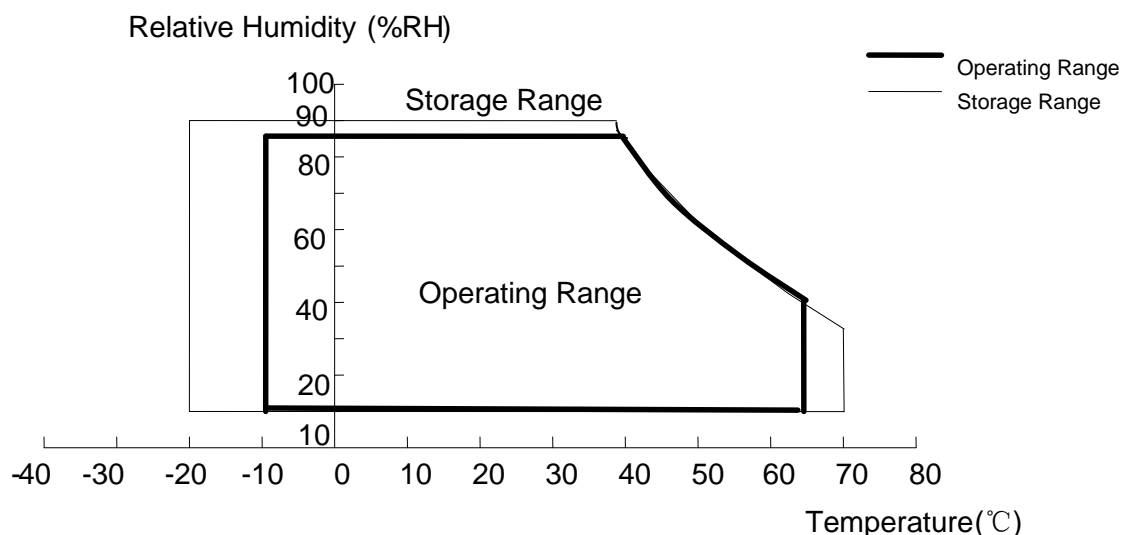
Note (2) Operating temperature 25°C, humidity 55%RH.

Note (3) ( $T \leq 40^\circ\text{C}$ ) Note static electricity. Maximum wet bulb temperature at 39°C or less. ( $T > 40^\circ\text{C}$ ) No condensation.

Note (4) There is a possibility of causing deterioration in the irregularity and others of the screen and the display fineness though the liquid crystal module doesn't arrive at destruction when using it at 65~70°C or -20~-10°C.

Note (5) There is a possibility of causing the fineness deterioration by the prolonged use in the (high temperature) humidity environment (60%RH or more).

Note (6) In the operating temperature item, the low temperature side is the ambient temperature regulations. The high temperature side is the panel surface temperature regulations.

**Figure 3 Absolute Ratings of Environment of the LCD Module**

Note (7) 10-200Hz, random vibration, 30min for X, Y, Z axis.

Note (8) 20ms, half sine wave, one time for X, Y, Z axis.

Document Name	M150GNN2 R3 Product Specification			Page 6 of 25	
Document No.		Made/Revised Date	2016/04/18	Ver.	00

### 3.0 Optical Characteristics

The optical characteristics are measured under stable conditions as following notes.

**Table 2 Optical Characteristics**

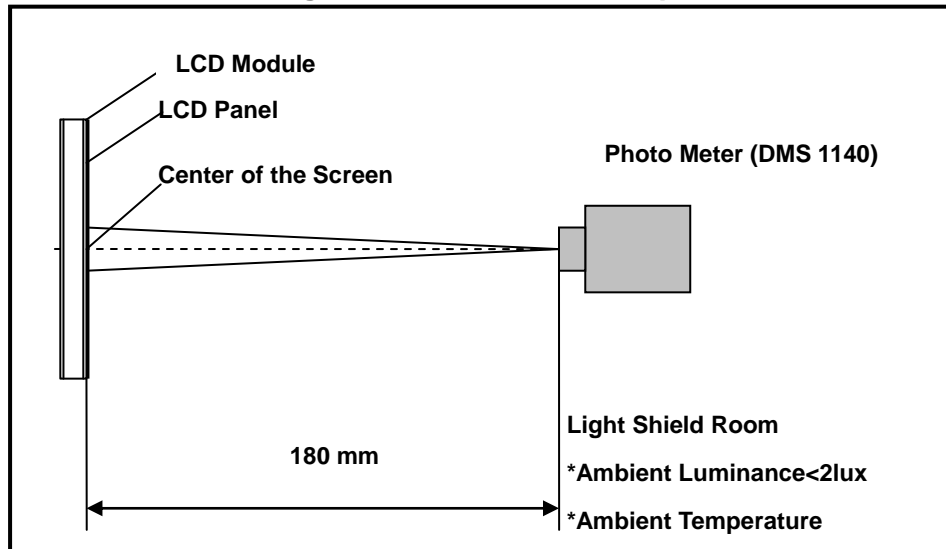
Item	Conditions		Min.	Typ.	Max.	Unit	Note
Viewing Angle (CR>10)	Horizontal	$\theta_{x+}$	70	80	-	degree	(1),(2),(3)
		$\theta_{x-}$	70	80	-		
	Vertical	$\theta_{y+}$	70	80	-		
		$\theta_{y-}$	60	80	-		
Contrast Ratio	Center		450	800	-	-	(1),(2),(4) $\theta_x=\theta_y=0^\circ$
Response Time	Rising + Falling		-	16	26	ms	(1),(2),(5) $\theta_x=\theta_y=0^\circ$
Color Chromaticity (CIE1931)	Red	x	Typ. -0.03	(0.625)	Typ. +0.03	-	(1),(2),(3) $\theta_x=\theta_y=0^\circ$
	Red	y		(0.352)		-	
	Green	x		(0.315)		-	
	Green	y		(0.630)		-	
	Blue	x		(0.149)		-	
	Blue	y		(0.067)		-	
	White	x	0.255	0.305	0.355	-	
	White	y	0.275	0.325	0.375	-	
NTSC	-		65	70	-	%	(1),(2),(3) $\theta_x=\theta_y=0^\circ$
White Luminance	Center		300	420	-	cd/m <sup>2</sup>	(1),(2) $\theta_x=\theta_y=0^\circ$
Luminance Uniformity	9 Points		75	80	-	%	(1),(2),(6) $\theta_x=\theta_y=0^\circ$

Note (1) Measurement Setup:

The LCD module should be stabilized at given temperature (25℃) for 15 minutes to avoid abrupt temperature change during measuring. In order to stabilize the luminance, the measurement should be executed after lighting backlight for 15 minutes in a windless room.

Document Name	M150GNN2 R3 Product Specification			Page 7 of 25	
Document No.		Made/Revised Date	2016/04/18	Ver.	00

**Figure 4 Measurement Setup**



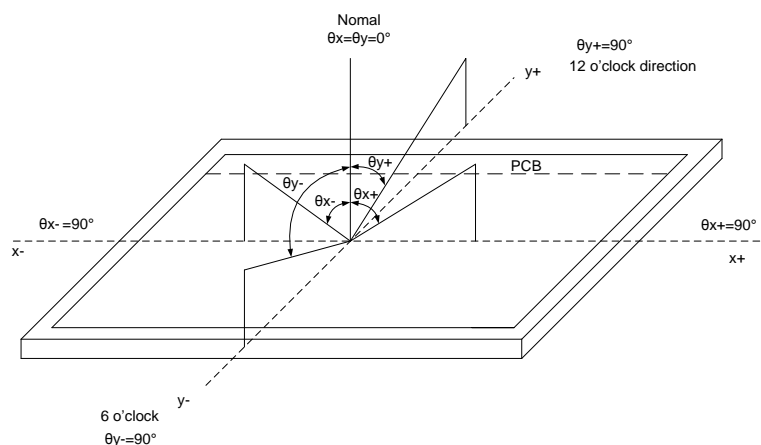
Note (2) The LED input parameter setting as:

I\_LED: 180mA

PWM\_LED: Duty 100 %

Note (3) Definition of Viewing Angle

**Figure 5 Definition of Viewing Angle**



Note (4) Definition Of Contrast Ratio (CR)

Document Name	M150GNN2 R3 Product Specification			Page 8 of 25	
Document No.		Made/Revised Date	2016/04/18	Ver.	00

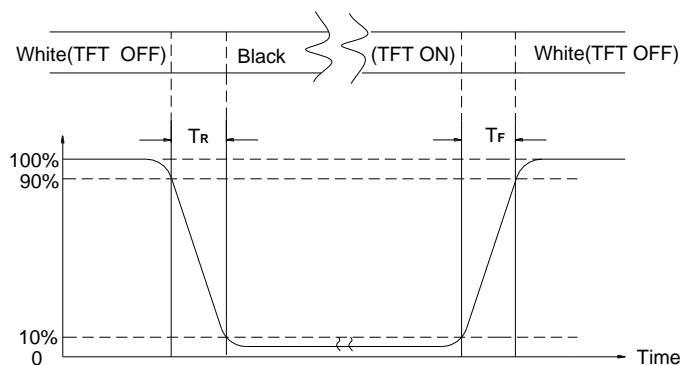
The contrast ratio can be calculated by the following expression:

$$\text{Contrast Ratio (CR)} = L_{255} / L_0$$

L255: Luminance of gray level 255, L0: Luminance of gray level 0

Note (5) Definition Of Response Time ( $T_R$ ,  $T_F$ )

**Figure 6 Definition of Response Time**



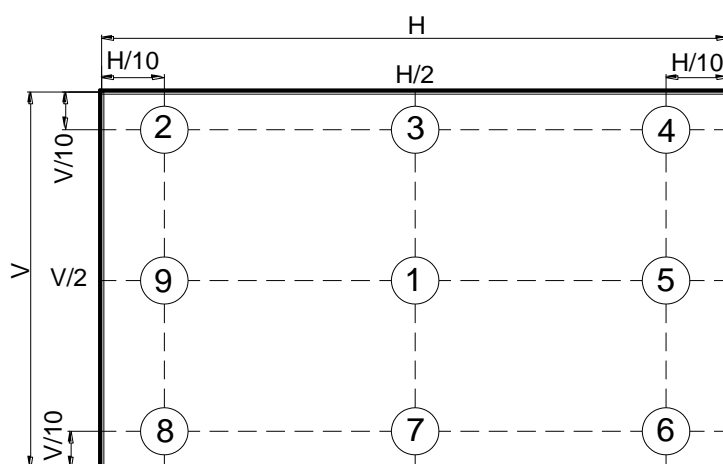
Note (6) Definition Of Luminance Uniformity (Ref.: Active Area)

Measure the luminance of gray level 255 at 9 points.

$$\text{Luminance Uniformity} = \text{Min.}(L_1, L_2, \dots L_9) / \text{Max.}(L_1, L_2, \dots L_9)$$

H—Active Area Width, V—Active Area Height, L—Luminance

**Figure 7 Measurement Locations of 9 Points**





Document Name	M150GNN2 R3 Product Specification			Page 9 of 25	
Document No.		Made/Revised Date	2016/04/18	Ver.	00

## 4.0 Electrical Characteristics

### 4.1 Interface Connector

**Table 3 Signal Connector Type**

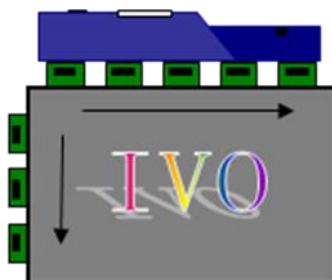
Item	Description
Manufacturer / Type	MSB240420HD
Mating Receptacle / Type (Reference)	P240420 or compatible

**Table 4 Signal Connector Pin Assignment**

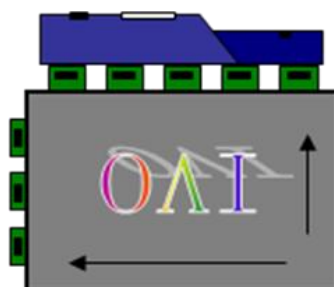
Pin No.	Symbol	Description	Remarks
1	VDD	Power Supply, 3.3V (typical)	
2	VDD	Power Supply, 3.3V (typical)	
3	VSS	Ground	
4	REV	Reverse Scan selection	Note
5	Rin1-	-LVDS differential data input (R0-R5,G0)	
6	Rin1+	+LVDS differential data input (R0-R5,G0)	
7	VSS	Ground	
8	Rin2-	-LVDS differential data input (G1-G5,B0-B1)	
9	Rin2+	+LVDS differential data input (G1-G5,B0-B1)	
10	VSS	Ground	
11	Rin3-	-LVDS differential data input (B2-B5,HS,VS,DE)	
12	Rin3+	+LVDS differential data input (B2-B5,HS,VS,DE)	
13	VSS	Ground	
14	CIkIN-	-LVDS differential clock input	
15	CIkIN+	+LVDS differential clock input	
16	GND	Ground	
17	Rin4-	-LVDS differential data input	
18	Rin4+	+VDS differential data input	
19	VSS	Ground	
20	NC	Not connect	

Note: I REV = LOW/NC

Document Name	M150GNN2 R3 Product Specification			Page 10 of 25	
Document No.		Made/Revised Date	2016/04/18	Ver.	00



II REV = High (3.3V)



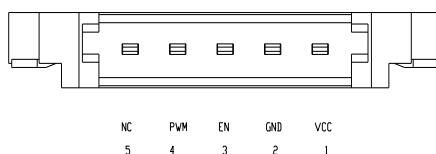
**Table 5 LED Connector Name / Designation**

Item	Description
Connector Name/Designation	LED Driver Connector
Manufacturer	STM or compatible
Connector Model Number	MSB24038P5A or compatible
Mating Model Number	P24038P5A or compatible

**Table 6 LED Connector Pin Assignment**

Pin No.	Symbol	Description	Remarks
1	Vcc	12V	-
2	GND	GND	-
3	Enable	5V-On / 0V-Off	-
4	Dimming	PWM Dimming	-
5	NC	NC	-

**Figure 8 LED Connector**



## 4.2 Signal Electrical Characteristics

### 4.2.1 Signal Electrical Characteristics For LVDS Receiver

The built-in LVDS receiver is compatible with (ANSI/TIA/TIA-644 ) standard.

Document Name	M150GNN2 R3 Product Specification			Page 11 of 25	
Document No.		Made/Revised Date	2016/04/18	Ver.	00

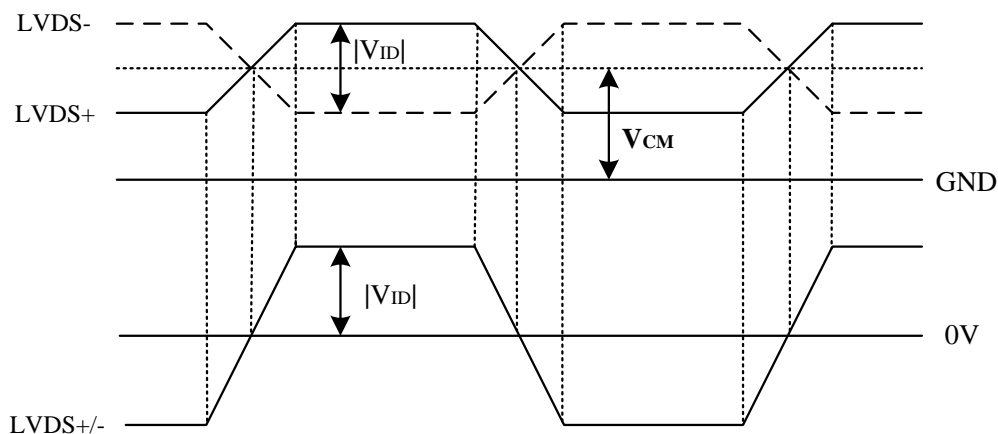
**Table 7 LVDS Receiver Electrical Characteristics**

Parameter	Symbol	Min.	Typ.	Max.	Unit	Conditions
Differential Input High	V <sub>th</sub>	-	-	+100	mV	V <sub>CM</sub> =+1.2V
Differential Input Low	V <sub>tl</sub>	-100	-	-	mV	V <sub>CM</sub> =+1.2V
Magnitude Differential Input	V <sub>ID</sub>	100	-	600	mV	(3)
Common Mode Voltage	V <sub>CM</sub>	-	1.2	VCC_LVDS-0.4- V <sub>ID</sub>  /2	V	-

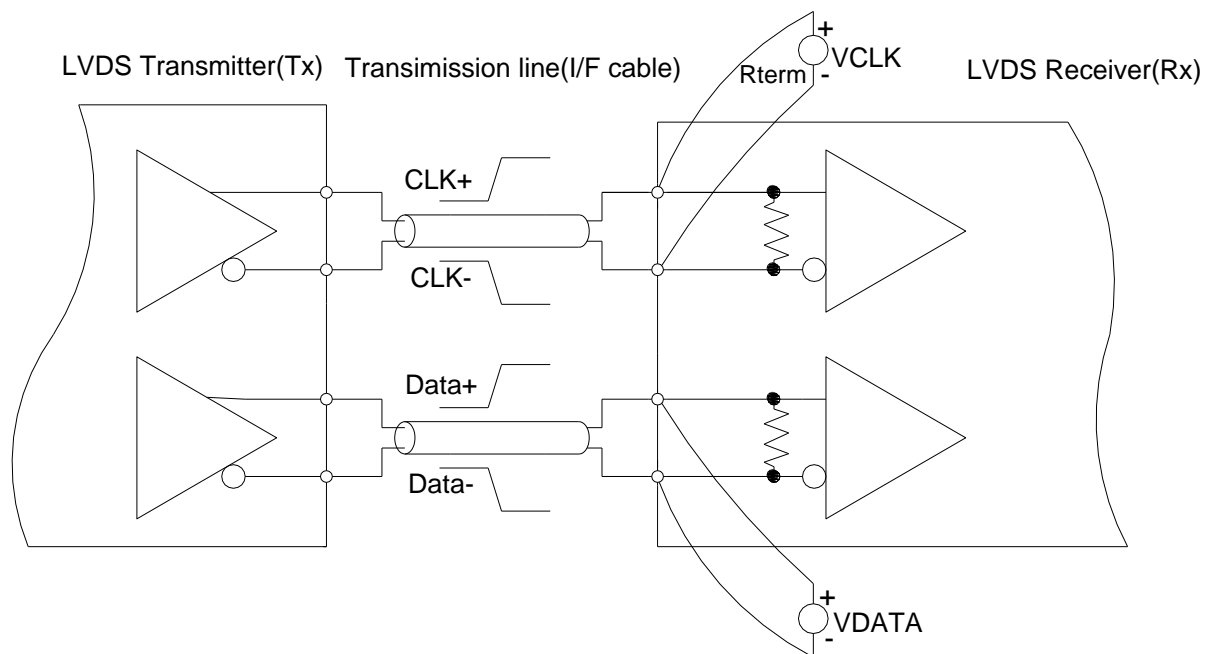
Note (1) Input signals shall be low or Hi- resistance state when VDD is off.

Note (2) All electrical characteristics for LVDS signal are defined and shall be measured at the interface connector of LCD.

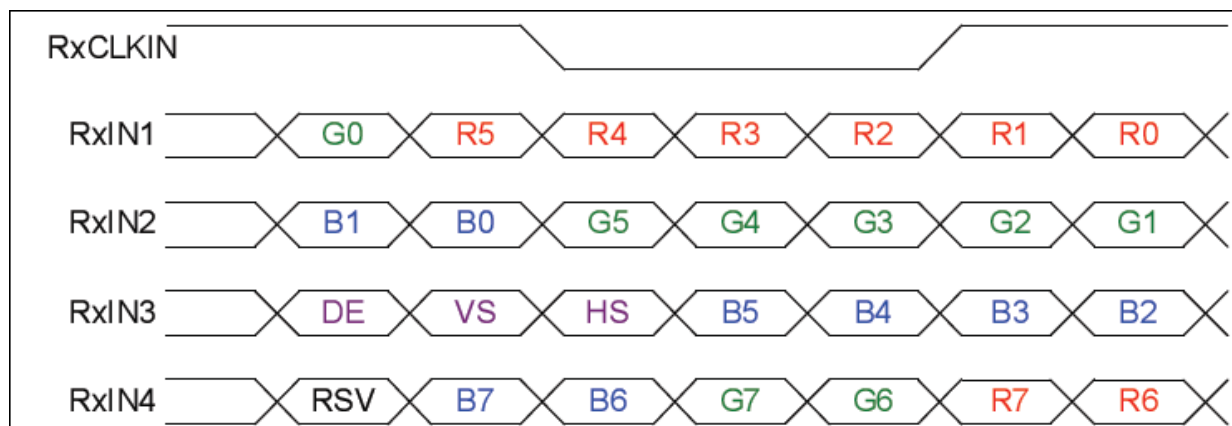
Note (3) |V<sub>ID</sub>|=100mV min is at hysteresis disable , and |V<sub>ID</sub>|=150mV min is at hysteresis enable

**Figure 9 Voltage Definitions****Figure 10 measurement System**

Document Name	M150GNN2 R3 Product Specification			Page 12 of 25	
Document No.		Made/Revised Date	2016/04/18	Ver.	00



**Figure 11 Data Mapping**

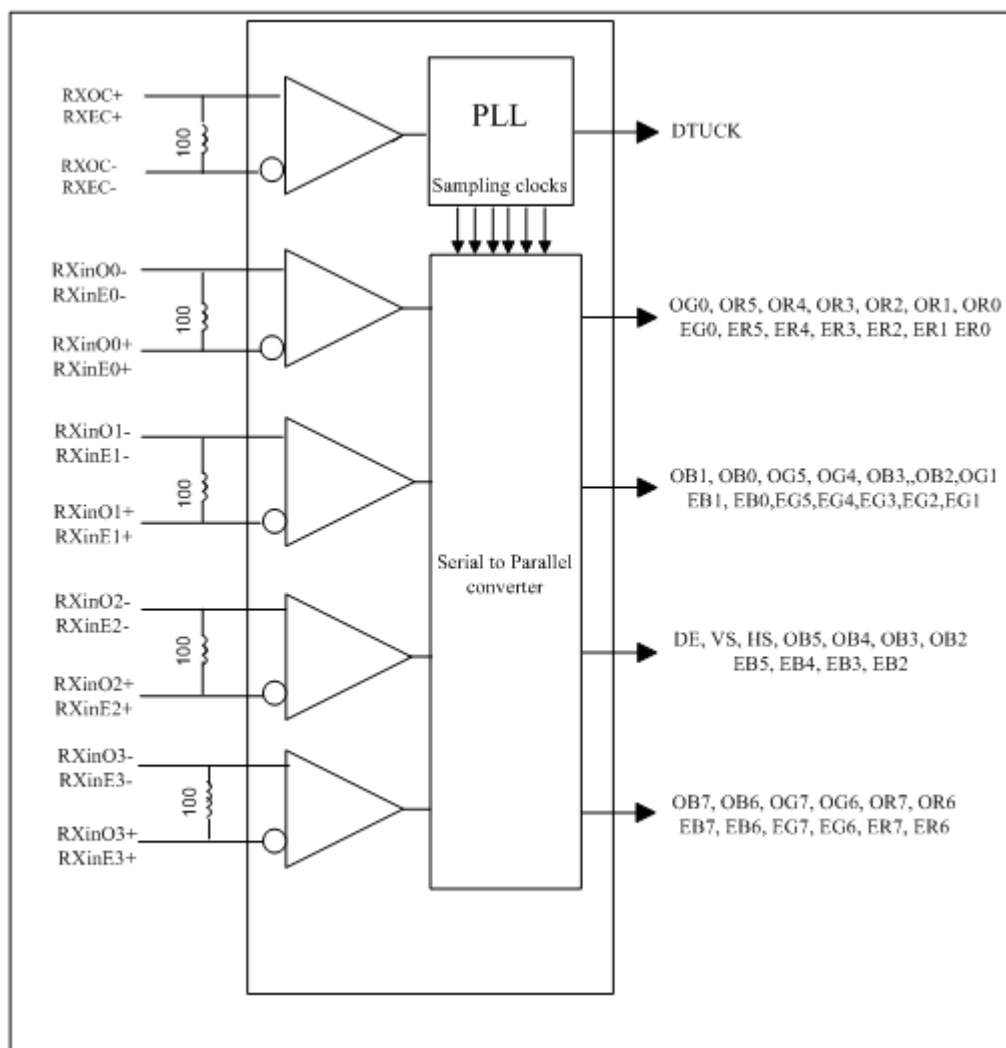


Document Name	M150GNN2 R3 Product Specification			Page 13 of 25	
Document No.		Made/Revised Date	2016/04/18	Ver.	00

#### 4.2.2 LVDS Receiver Internal Circuit

Figure 12 shows the internal block diagram of the LVDS receiver. This LCD module equips termination resistors for LVDS link.

**Figure 12 LVDS Receiver Internal Circuit**



Document Name	M150GNN2 R3 Product Specification			Page 14 of 25	
Document No.		Made/Revised Date	2016/04/18	Ver.	00

### 4.3 Interface Timings

**Table 8 Interface Timings**

Parameter	Symbol	Min.	Typ.	Max.	Unit
LVDS Clock Frequency	Fclk	50	65	80	MHz
H Total Time	HT	1,056	1,344	1,720	Clocks
H Active Time	HA	1,024	1,024	1,024	Clocks
V Total Time	VT	772	806	990	Lines
V Active Time	VA	768	768	768	Lines
Frame Rate	FV	55	60	70	Hz

Note (1) Synchronization Method: DE only

Note (2) H Blank area and V Blank area cannot be changed at every frame.

### 4.4 Input Power Specifications

Input power specifications are as follows.

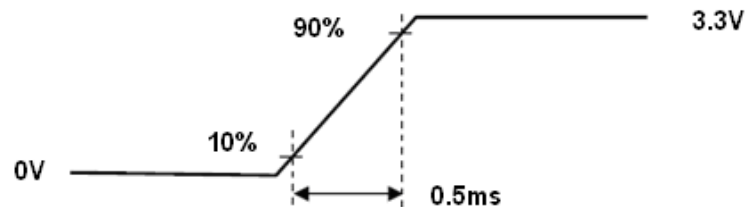
**Table 9 Input Power Specifications**

Parameter	Symbol	Min.	Typ.	Max.	Unit	Note
<b>System Power Supply</b>						
LCD Drive Voltage (Logic)	V <sub>DD</sub>	3.0	3.3	3.6	V	(2), (4)
VDD Current	I <sub>DD</sub>	-	0.25	-	A	(3),(4)
VDD Power Consumption	P <sub>DD</sub>	-	-	1.3	W	
Rush Current	I <sub>Rush</sub>	-	-	3.0	A	(1),(4),(5)
Allowable Logic/LCD Drive Ripple Voltage	V <sub>VDD-RP</sub>	-	-	200	mV	(4)
<b>LED Power Supply</b>						
LED Input Voltage	V <sub>LED</sub>	(10.8)	(12)	(12.6)	V	(4)(6)
LED Power Consumption	P <sub>LED</sub>	-	-	(7.5)	W	(4),(6)
LED Forward Voltage	V <sub>F</sub>	(2.9)	-	(3.3)	V	(4)
LED Forward Current	I <sub>F</sub>	-	(60)	-	mA	
PWM Signal Voltage	V <sub>PWM</sub>	High	3.3	5	5.5	
		Low	-	0	0.8	
LED Enable Voltage	V <sub>LED_EN</sub>	High	2.0	5	5.5	
		Low	-	-	0.8	
Input PWM Frequency	F <sub>PWM</sub>	200	-	20K	Hz	
LED Life Time	LT	30,000	-	-	Hours	(4)(7)

Document Name	M150GNN2 R3 Product Specification			Page 15 of 25	
Document No.		Made/Revised Date	2016/04/18	Ver.	00

Note (1) Measure Condition

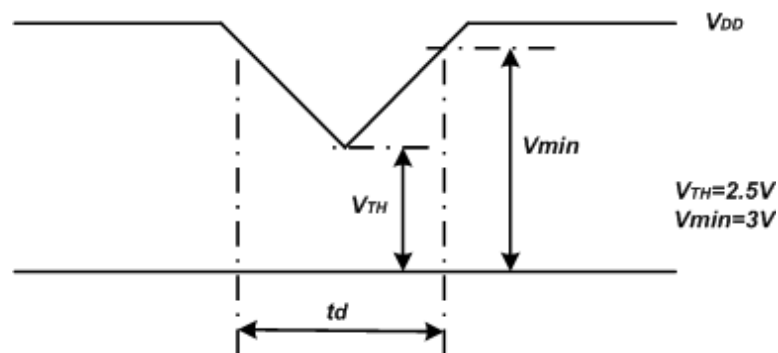
**Figure 13 VDD Rising Time**



Note (2) VDD Power Dip Condition

$V_{TH} < V_{DD} \leq V_{min}$ ,  $t_d \leq 10ms$  (a time of the voltage return to normal), our panel can revive automatically.

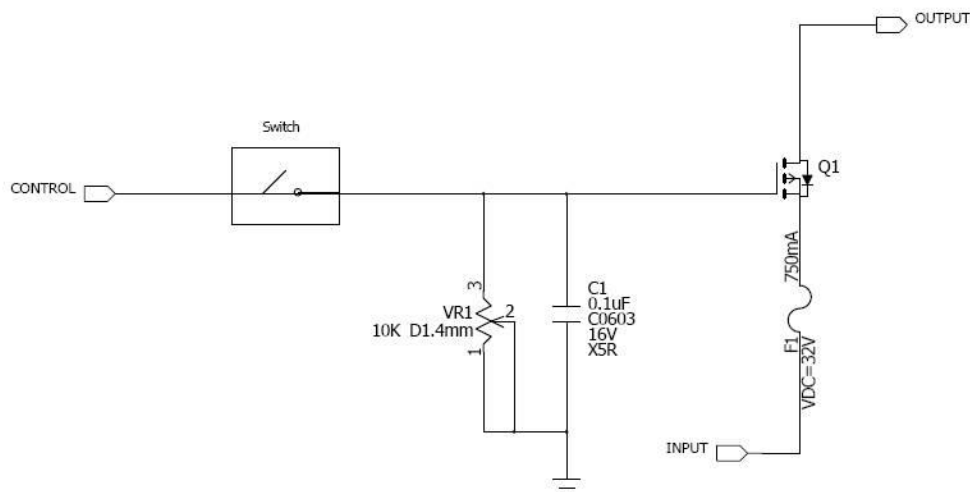
**Figure 14 VDD Power Dip**



Note (3) Frame Rate=60Hz, VDD=3.3V, DC Current.

Note (4) Operating temperature 25°C, humidity 55%RH.

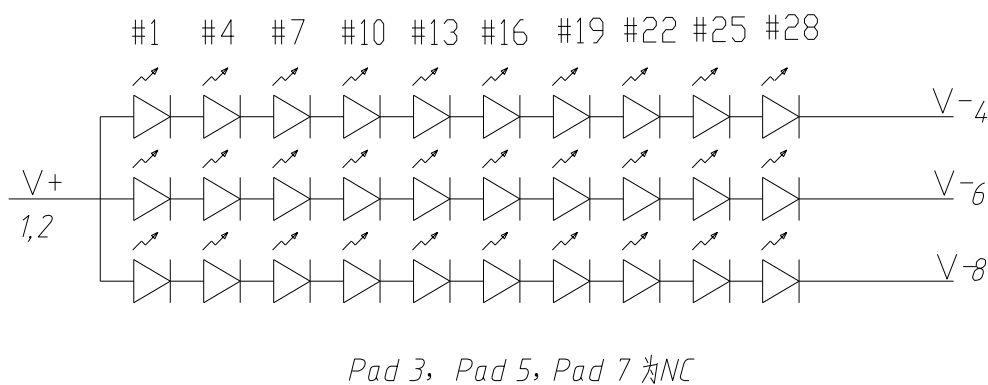
Note (5) The reference measurement circuit of rush current.



Document Name	M150GNN2 R3 Product Specification			Page 16 of 25	
Document No.		Made/Revised Date	2016/04/18	Ver.	00

Note (6) Definition of  $V_{LED}$  and  $P_{LED}$

$$V_{LED} = V_F \times 10, \quad P_{LED} = V_{LED} \times I_F \times 3$$



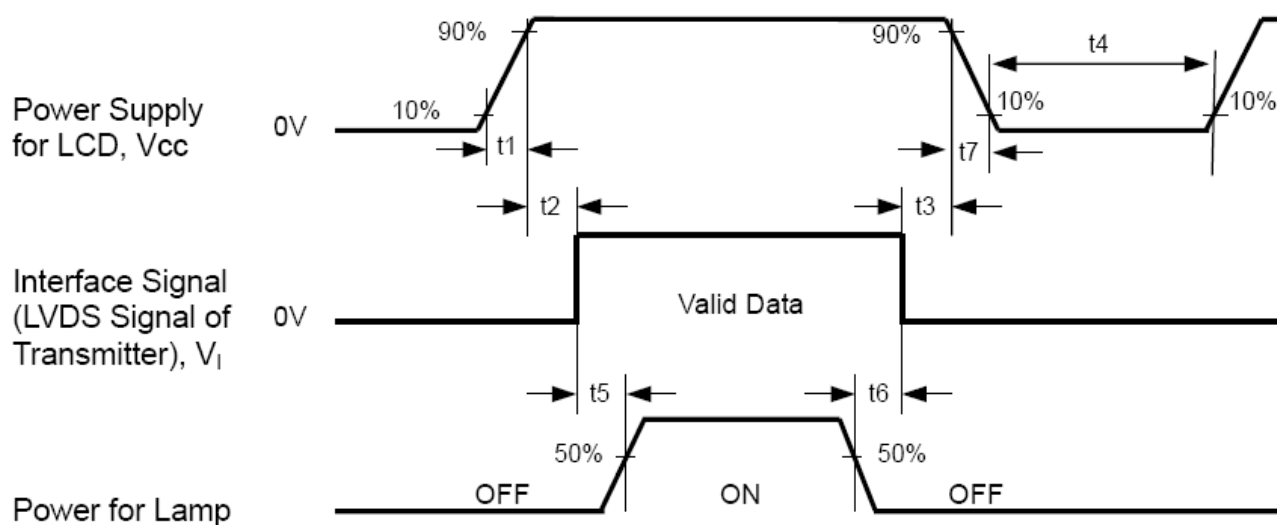
Note (7) The LED life time define as the estimated time to 50% degradation of initial luminous.

Document Name	M150GNN2 R3 Product Specification			Page 17 of 25	
Document No.		Made/Revised Date	2016/04/18	Ver.	00

#### 4.5 Power ON/OFF Sequence

Interface signals are also shown in the chart. Signals from any system shall be Hi- resistance state or low level when VDD voltage is off.

**Figure 15 Power Sequence**



**Table 10 Power Sequencing Requirements**

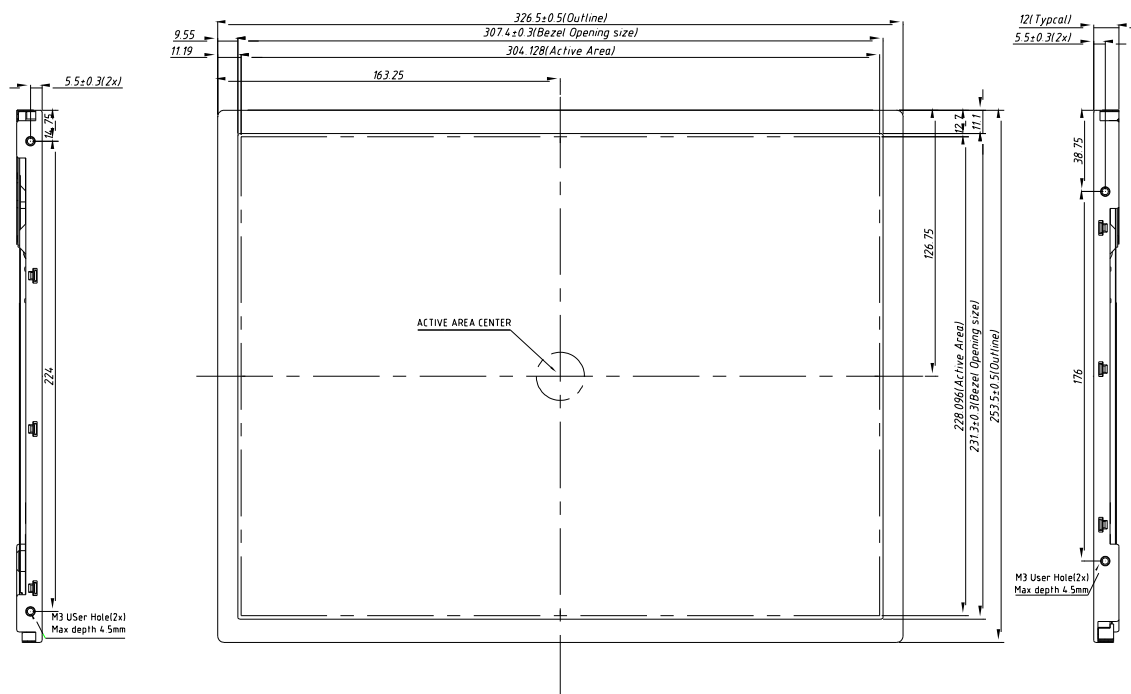
Parameter	Symbol	Min.	Typ.	Max.	Unit
VDD Rise Time	T1	0.5	-	10	ms
VDD Good to Signal Valid	T2	0	-	20	ms
Signal Disable to Power Down	T3	0	-	1000	ms
Power Off	T4	1000	-		ms
Signal Valid to Backlight On	T5	300	-		ms
Backlight Off to Signal Disable	T6	200	-		ms
VDD Fall Time	T7	0	-	100	ms

## 5.0 Mechanical Characteristics

### 5.1 Outline Drawing

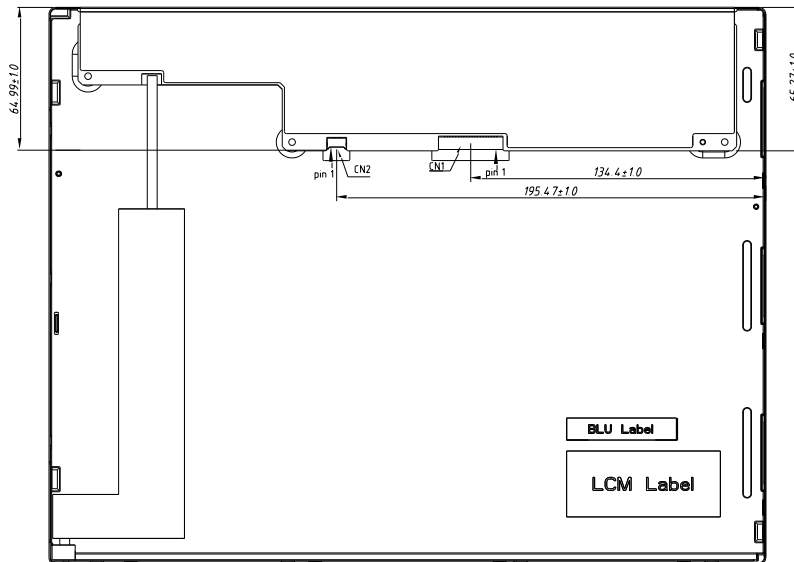
Document Name	M150GNN2 R3 Product Specification			Page 18 of 25	
Document No.		Made/Revised Date	2016/04/18	Ver.	00

**Figure 16 Reference Outline Drawing (Front Side)**



Document Name	M150GNN2 R3 Product Specification			Page 19 of 25	
Document No.		Made/Revised Date	2016/04/18	Ver.	00

**Figure 17 Reference Outline Drawing (Back Side)**



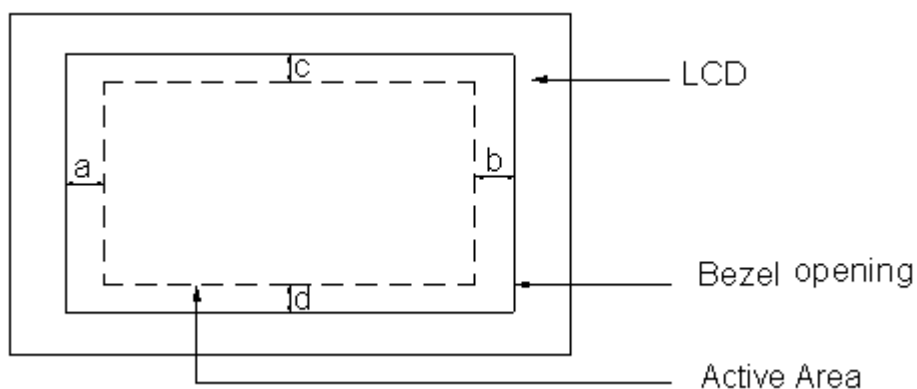
Document Name	M150GNN2 R3 Product Specification			Page 20 of 25	
Document No.		Made/Revised Date	2016/04/18	Ver.	00

## 5.2 Dimension Specifications

**Table 11 Module Dimension Specifications**

Item	Min.	Typ.	Max.	Unit
Width	326.0	326.5	327.0	mm
Height	253.0	253.5	254.0	mm
Thickness	11.5	12.0	12.5	mm
Weight	-	-	1200	g
BM:   a-b   &   c-d	-	-	≤1.0	mm

**Figure 18 BM Area**





Document Name	M150GNN2 R3 Product Specification			Page 21 of 25	
Document No.		Made/Revised Date	2016/04/18	Ver.	00

## 6.0 Reliability Conditions

Item		Package	Test Conditions		Note	
High Temperature Operating Test		Module	65℃, 300 hours		(1),(2),(3),(4)	
Low Temperature Operating Test		Module	-10℃, 300 hours		(1),(2),(3),(4)	
High Temperature/High Humidity Operating Test		Module	50℃, 85%RH, 300 hours		(1),(2),(3),(4)	
Thermal Shock Non-operation Test		Module	-20℃~70℃, 1hr/each cycle, 100cycles		(1),(2),(4)	
Shock Non-operating Test		Module	50G,20ms,Half Sine Wave,(± X,± Y,± Z)		(4)	
Vibration Non-operating Test		Module	1.5G , 10~200 Hz , x、 y、 z each axis/30min		(4)	
ESD Test	Operating	Module	Contact	± 8 KV, 150pF(330Ohm)	(5)	
			Air	± 15 KV, 150pF(330Ohm)		
	Non-operating		Contact	± 10 KV, 150pF(330Ohm)		
			Air	± 20 KV, 150pF(330Ohm)		
Image Sticking		Module	5*7chessboard: 1、 25℃ , 2/4/24hs change to 50% Gray; Not visible through ND 10% 2、 70℃ , 2/4/24hs change to 50% Gray; Not visible through ND 8%		-	

Note (1) All the judgments are under room temperature and the sample need to be static more than 2 hours in the room temperature before judge.

Note (2) During measurement, the condensation water or remains shall not be allowed.

Note (3) In operating test, the backlight voltage and current must be in specfcation.

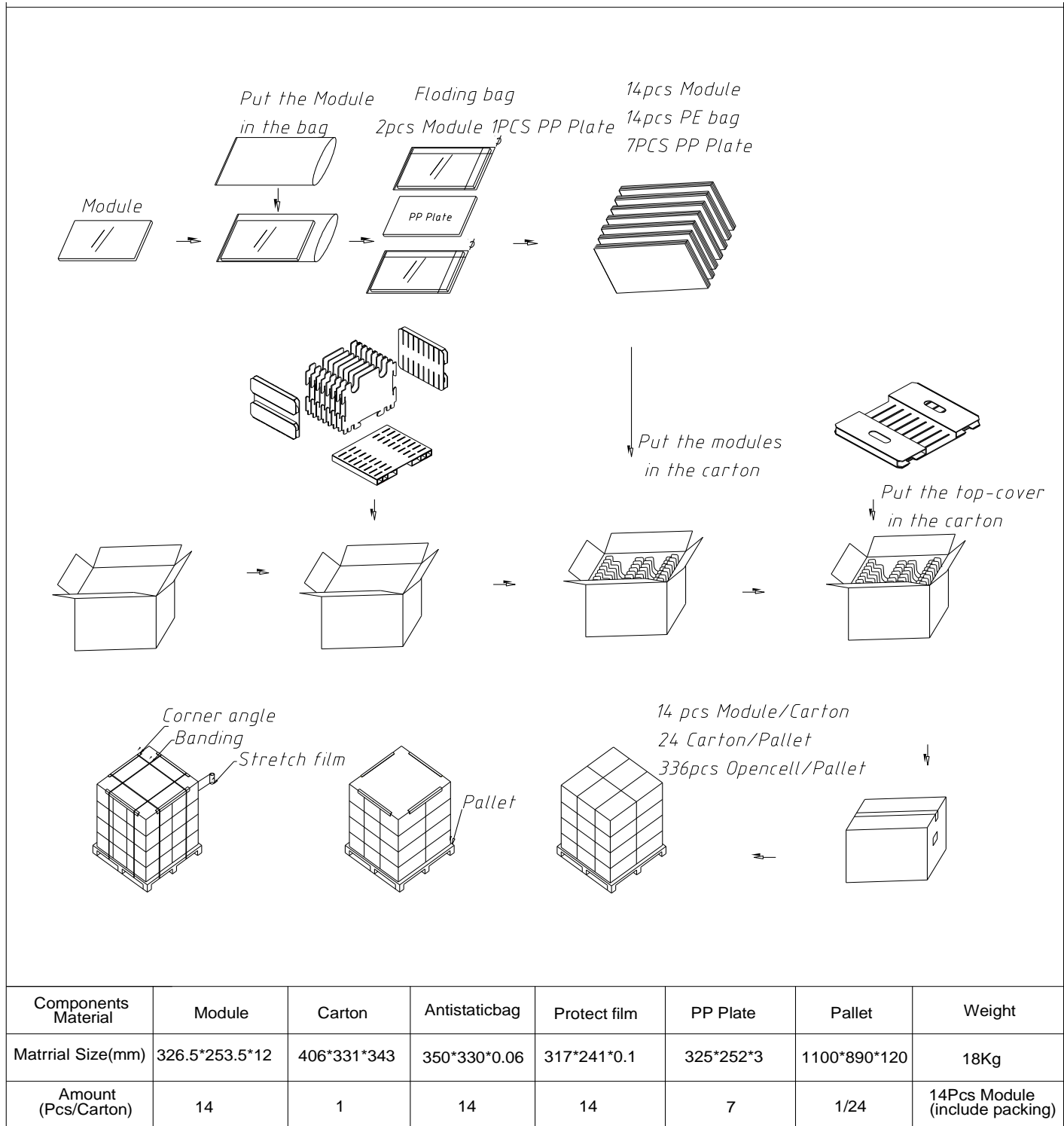
Note (4) There is no display function issue occurred, all the cosmetic specification is judged before the reliability stress.

Note (5) In case of malfunction defect caused by ESD damage. If it would be recovered to normal state after resetting, it would be judge as pass.

Document Name	M150GNN2 R3 Product Specification			Page 22 of 25	
Document No.		Made/Revised Date	2016/04/18	Ver.	00

## 7.0 Package Specification

Figure 19 Packing Method



Document Name	M150GNN2 R3 Product Specification			Page 23 of 25	
Document No.		Made/Revised Date	2016/04/18	Ver.	00

## 8.0 Lot Mark



Note: This picture is only an example.

### 8.1 20 Lot Mark

1	2	3	4	5	6	7	8	9	10	11	12	13	14	15	16	17	18	19	20
---	---	---	---	---	---	---	---	---	----	----	----	----	----	----	----	----	----	----	----

Code 1,2,4,5,6,7,8,9,10,11,16: IVO internal flow control code.

Code 3: Production Location.

Code 12: Production Year.

Code 13: Production Month.

Code 14,15: Production Day.

Code 17,18,19,20: Serial Number.

### 8.2 23 Product Barcode

1	2	3	4	5	6	7	8	9	10	11	12	13	14	15	16	17	18	19	20	21	22	23
---	---	---	---	---	---	---	---	---	----	----	----	----	----	----	----	----	----	----	----	----	----	----

Code 1,2: Manufacture District.

Code 3,4,5,6,7: IVO internal module name.

Code 8,9,10,13,16: IVO internal flow control code.

Code 11,12: Cell location Suzhou, China defined as "KS".

Code 14 ,15: Module location Kunshan, China defined as "KS"; Yangzhou, China defined as "YZ"; Shenzhen, China defined as "SE"; Zhuhai, China defined as "ZH"; Suzhou, China defined as "SZ".

Code 17,18,19 : Year, Month, Day refer to Note(1), Note(2) and Note(3).

Note (1) Production Year

Year	2006	2007	2008	2009	2010	2011	2012	2013	.....	2035
Mark	6	7	8	9	A	B	C	D	.....	Z

Note (2) Production Month

Month	Jan.	Feb.	Mar.	Apr.	May.	Jun.	Jul.	Aug.	Sep.	Oct	Nov.	Dec.
Mark	1	2	3	4	5	6	7	8	9	A	B	C

Document Name	M150GNN2 R3 Product Specification			Page 24 of 25	
Document No.		Made/Revised Date	2016/04/18	Ver.	00

Note (3) Production Day: 1~V.

Code 20~23 : Serial Number.

## 9.0 General Precaution

### 9.1 Use Restriction

This product is not authorized for use in life supporting systems, aircraft navigation control systems, military systems and any other application where performance failure could be life-threatening or otherwise catastrophic.

### 9.2 Handling Precaution

- (1) Please mount LCD module by using mounting holes arranged in four corners tightly.
- (2) Do not disassemble or modify the module. It may damage sensitive parts inside LCD module, and may cause scratches or dust on the display. IVO does not warrant the module, if customers disassemble or modify the module.
- (3) If LCD panel is broken and liquid crystal spills out, do not ingest or inhale liquid crystal, and do not contact liquid crystal with skin. If liquid crystal contacts mouth or eyes, rinse out with water immediately. If liquid crystal contacts skin or cloths, wash it off immediately with alcohol and rinse thoroughly with water.
- (4) Disconnect power supply before handling LCD module.
- (5) Refrain from strong mechanical shock and /or any force to the module.
- (6) Do not exceed the absolute maximum rating values, such as the supply voltage variation, input voltage variation, variation in parts parameters, environmental temperature; etc otherwise LCD module may be damaged. It's recommended employing protection circuit for power supply.
- (7) Do not touch, push or rub the polarizer with anything harder than HB pencil lead. Use fingerstalls of soft gloves in order to keep clean display quality, when persons handle the LCD module for incoming inspection or assembly.
- (8) When the surface is dusty, please wipe gently with absorbent cotton or other soft material. When cleaning the adhesives, please use absorbent cotton wetted with a little petroleum benzene or other adequate solvent.
- (9) Wipe off saliva or water drops as soon as possible. If saliva or water drops contact with polarizer for a long time, they may causes deformation or color fading.
- (10) Protection film must remove very slowly from the surface of LCD module to prevent from electrostatic occurrence.
- (11) Because LCD module uses CMOS-IC on circuit board and TFT-LCD panel, it is very weak to electrostatic discharge, please be careful with electrostatic discharge. Persons who handle the module should be grounded through adequate methods.
- (12) Do not adjust the variable resistor located on the module.

### 9.3 Storage Precaution

- (1) Please do not leave LCD module in the environment of high humidity and high temperature for a long time.
- (2) The module shall not be exposed under strong light such as direct sunlight. Otherwise, display characteristics may be changed.
- (3) The module should be stored in a dark place. It is prohibited to apply sunlight or fluorescent light in storage.

### 9.4 Operation Precaution

- (1) Do not connect or disconnect the module in the "Power On" condition.
- (2) Power supply should always be turned on/off by "Power On/Off Sequence".
- (3) Module has high frequency circuits. Sufficient suppression to the electromagnetic



Document Name	M150GNN2 R3 Product Specification			Page 25 of 25	
Document No.		Made/Revised Date	2016/04/18	Ver.	00

interference should be done by system manufacturers. Grounding and shielding methods may be important to minimize the interference.

- (4) After installation of the TFT module into an enclosure, do not twist nor bend the TFT module even momentary. At designing the enclosure, it should be taken into consideration that no bending/twisting forces are applied to the TFT module from outside. Otherwise the TFT module may be damaged.

#### **9.5 Others**

- (1) Ultra-violet ray filter is necessary for outdoor operation.
- (2) Avoid condensation of water which may result in improper operation or disconnection of electrode.
- (3) If the module keeps displaying the same pattern for a long period of time, the image may be "sticked" to the screen.
- (4) This module has its circuitry PCB's on the rear side and should be handled carefully in order not to be stressed.

#### **9.6 Disposal**

When disposing LCD module, obey the local environmental regulations.